

Lesson 2 for
October 8, 2022



DEATH IN A SINFUL WORLD



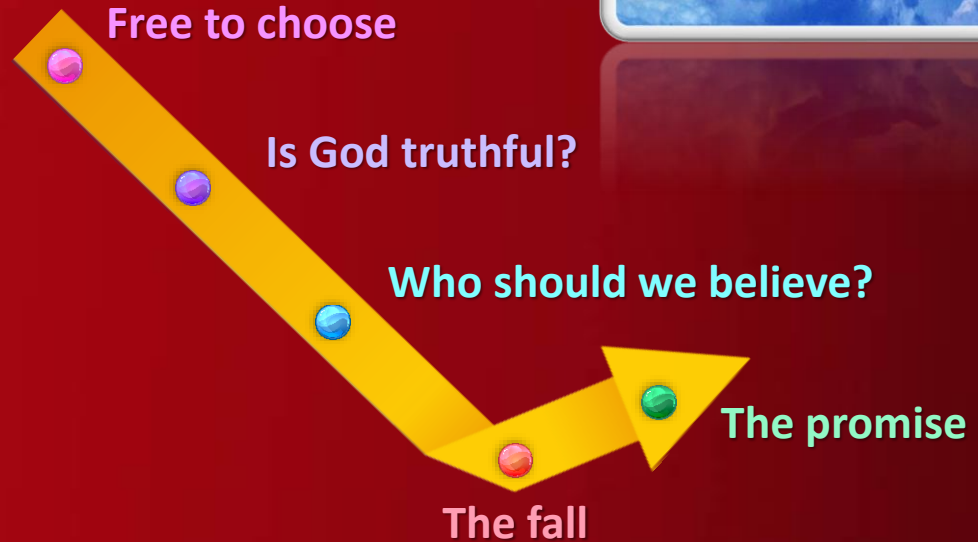
“Therefore, just as
through one man sin
entered the world, and
death through sin, and
thus death spread to all
men, because all sinned.”

Romans 5:12



An unexpected storm was triggered in Heaven when God decided to create us. The highest-ranking angel—Lucifer—began to envy God.

God warned the first humans about the rebel and gave them clear instructions that would test their loyalty to God or to the enemy.

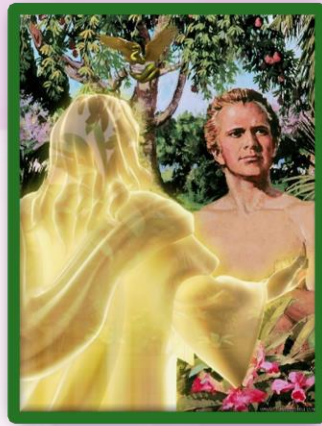


FREE TO CHOOSE

"And the Lord God commanded the man, saying, 'Of every tree of the garden you may freely eat; but of the tree of the knowledge of good and evil you shall not eat, for in the day that you eat of it you shall surely die.'" (Genesis 2:16-17)

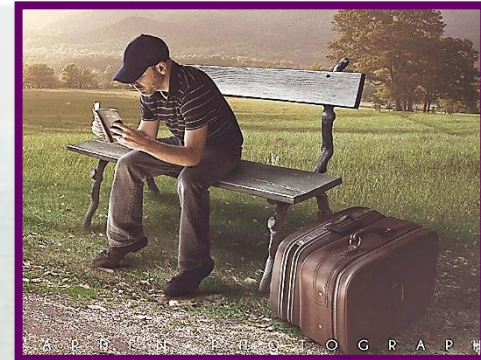
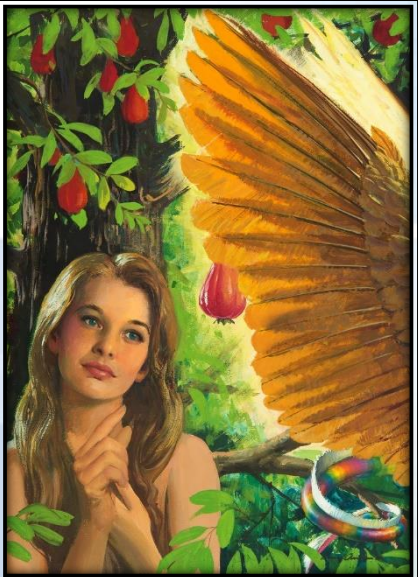


God created us with free will. That's why He advised Adam to choose not to eat the fruit.



Obedience was the only logical choice. However, the tempter appeared as a serpent and encouraged them to choose disobedience. The serpent was eating the fruit and it had not died. It insinuated that God was setting rules capriciously.

Eve forgot that God's Word is always trustworthy, even when it might seem illogical. We're facing similar situations every day. We must choose between obeying God or mistrusting and disobeying Him.



IS GOD TRUTHFUL?

“God knows that if you eat the fruit from that tree you will learn about good and evil, and then you will be like God!” (Genesis 3:5 ERV)

Satan didn't begin the conversation with an open temptation. He made a vague question that Eve could answer (Gn. 3:1-3). That way he got Eve's attention.

Then, he openly contradicted God and stated that God's motives were not clear (Gn. 3:4-5). Is God truthful? Is He hiding something? Does He really want your welfare?



Eve had to choose between believing God or not. She analyzed the issue and doubted God's Word (Gn. 3:6).



The nutritional aspect: “the tree was good for food”



The esthetic aspect: “it was pleasant to the eyes”



The logical aspect: “a tree desirable to make one wise”

If we doubt God, we may end defending things that result in death.



WHO SHOULD WE BELIEVE?

[God said:] "in the day that you eat of it you shall surely die."

[Satan said:] "You will not surely die." (Genesis 2:17; 3:4)

Satan openly contradicted God's Word by saying that Adam and Eve couldn't die because they were immortal.

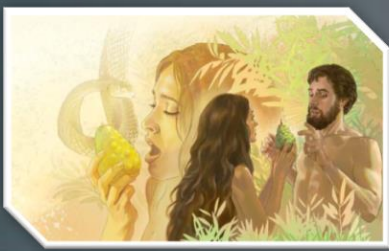
Adam and Eve didn't die in that moment, but they eventually did (Gn. 3:19). Then, Satan changed his strategy. He began to convince humans that their bodies were not immortal, but their souls were.



Almost all civilizations believe in some kind of conscious existence after death. Even Christianity and secular worldviews have embraced this lie.



The Word of God is clear enough: our souls also die (Ps. 115:17; 146:4; Eccl. 9:5; Mt. 10:28). Who should we believe?



THE FALL

“And He said, ‘Who told you that you were naked? Have you eaten from the tree of which I commanded you that you should not eat?’” (Genesis 3:11)



Adam and Eve thought that the fruit would bring them superior knowledge. They left God’s side and joined Satan’s by eating it. This brought tragic consequences:

Theological



They were afraid of God and hid from Him (Gn. 3:10)

Social



They accused one another (Gn. 3:12)

Physical



They would feel pain and die (Gn. 3:16-17, 19)

Ecological



Nature would deteriorate (Gn. 3:18)

Their disobedience was a death sentence for all humankind: “For the living know that they will die” (Eccl. 9:5; see Rom. 5:12).

THE PROMISE

“And I will put enmity between you and the woman, and between your seed and her Seed; He shall bruise your head, and you shall bruise His heel.” (Genesis 3:15)



The word “enmity” (Hebrew *'eybah*) implies not only a long-lasting cosmic controversy between good and evil, but also a personal repulsion to sin, which has been implanted by God’s grace in the human mind.

This repulsion moves us to desiring to be free of Satan’s yoke, but we’re unable to do so. Then, God comes to our rescue: the Messiah—the woman’s Seed—has overcome and has saved us from eternal death.

God made the first animal sacrifice, a symbol of Jesus’ redeeming death. He clothed Adam and Eve with the skin of the animal, covering them with His protective justice. He didn’t leave us to our fate but gave us hope that we’ll return to His loving arms eventually.



“Satan is well aware that the weakest soul who abides in Christ is more than a match for the hosts of darkness, and that, should he reveal himself openly, he would be met and resisted. Therefore he seeks to draw away the soldiers of the cross from their strong fortification, while he lies in ambush with his forces, ready to destroy all who venture upon his ground. Only in humble reliance upon God, and obedience to all His commandments, can we be secure.”

E. G. W. (The Great Controversy, cp. 32, p. 530)